



**Básculas
BALSER**

Tel : (011) 2057-4031
info@balsar.com.ar
www.balsar.com.ar



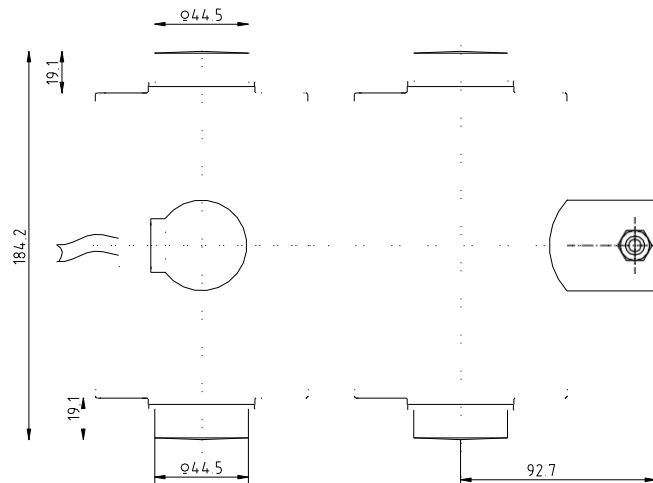
KELI CEE
CENTRAL & EASTERN EUROPE



Keli Electric Manufacturing(Ningbo)Co.,Ltd.

ZSNG-A Loadcell

ZSNG-A



Truck scale

TECHNICAL PARAMETER

OAP version 4Wires:Exc+(Blue);Exc-(Black);Sig+(White);Sig-(Red)

Rated capacities(Emax)	50, 100, 120Klb	Temperature range, compensated	-10°C~+40°C
Sensitivity	2.0±0.03mV/V	Temperature range, operating	-30~+70°C
Total error	±0.03%F.S	Maximum safe overload	150%F.S
Creep error (30min)	±0.02%F.S	Ultimate overload	200%F.S
Zero balance	±1%F.S	Excitation, recommended	10~12DC
TC ZERO	±0.02%F.S/10°C	Excitation, maximum	15V DC
TC SPAN	±0.02%F.S/10°C	Protection class	IP68
Input resistance	1150±10Ω	Construction	Alloy Steel
Output resistance	1050±10Ω	Cable	Length: 9m
Insulation resistance	≥5000MΩ		Diameter: φ6mm

Keli CEE

ul. Przeskok 53

63-400 Ostrów Wielkopolski

tel./fax. +48 62 592 42 78

e-mail: info@keli-cee.pl

www.keli-cee.pl